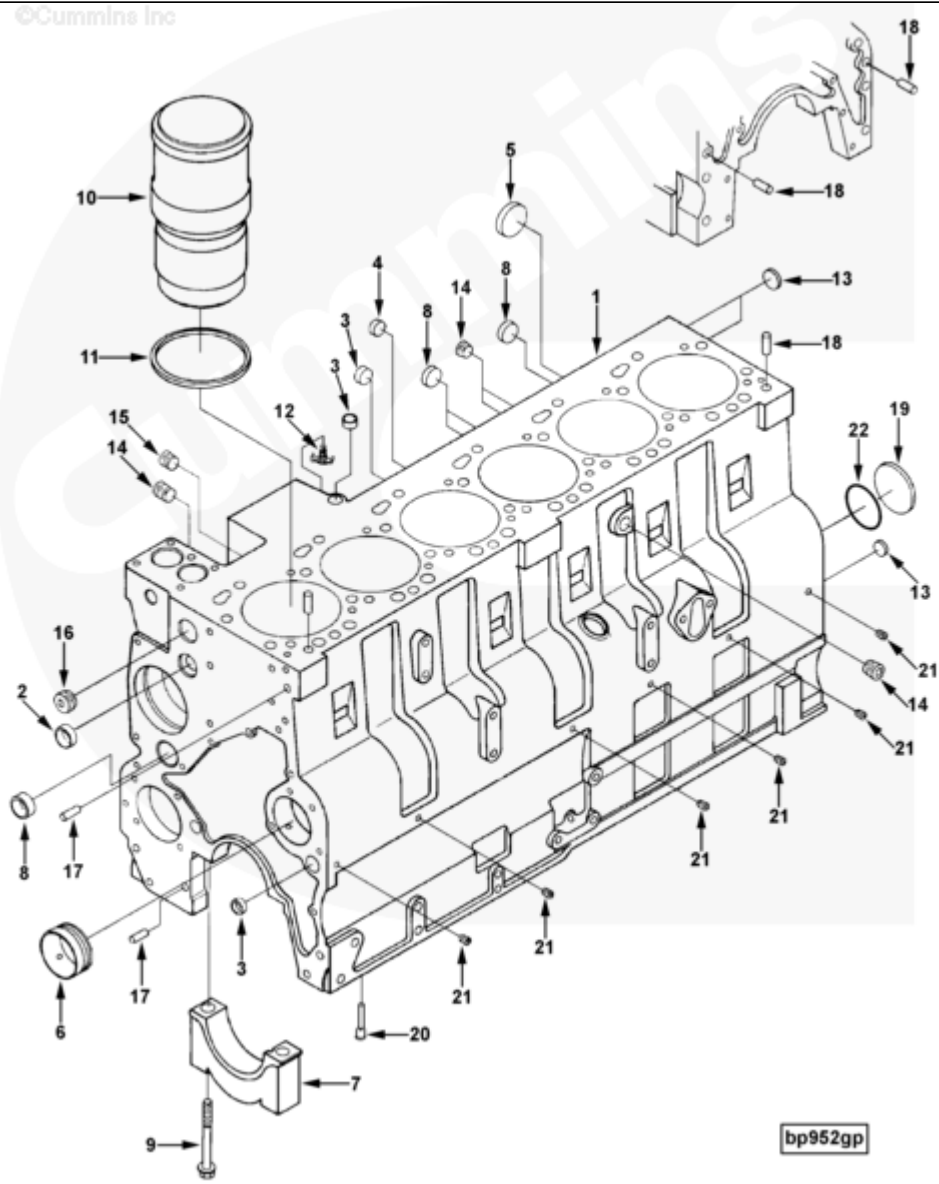




# Parts Catalog - Option Detail

Electronic Parts Catalog - Option Detail				
Option	Group	Graphic	Film Card	Date
BP9897-10	01.01	bp952gp	Z	16-JUN-04
<b>Engines</b>	6C8.3, C GAS PLUS CM556, G8.3, G8.3 CM558, GTA8.3 CM558, ISC CM2150, ISC CM554, ISC CM850, ISC8.3 CM2250, ISC8.3 G CM2180 C101, ISL CM2150, ISL CM554, ISL CM850, ISL G CM2180, ISL8.9 CM2150 L110, ISL8.9 CM2880 L112, ISL9 CM2150 SN, ISL9 CM2250, ISL9 CM2350 L101, ISL9 CM2350 L111, ISLE4 CM850, L GAS PLUS CM556, L8.9, L8.9 L121, L8.9G CMOH2.0 L125B, L9 CM2350 L116B, L9 CM2350 L119B, L9 CM2350 L120C, L9 CM2350 L123B, L9.3 L105, L9.5 L117, L9N CM2380 L124B, QSC8.3 CM2250, QSC8.3 CM2880 C102, QSC8.3 CM554, QSC8.3 CM850(CM2850), QSL9 CM2250, QSL9 CM2250 L115, QSL9 CM2350 L102, QSL9 CM2350 L107, QSL9 CM2350 L118, QSL9 CM2350 L122, QSL9 CM554, QSL9 CM850(CM2850), QSL9 G CM558, QSL9 M CM2250 L106, QSL9.3 CM2880 L113			



SMALL | MEDIUM | LARGE

Cart	Ref No	Part Number	Part Description	Required	Remarks
<a href="#">View My Cart</a>					
		<a href="#">BP9897-10</a>	Cylinder Block		<a href="#">MR - CYLINDER BLOCK...(More)</a>
					Engine Family: C Series
					Cylinders: 6
					Aspiration: Charged Air
					Cooled, Turbocharged
					Turbo Exhaust Outlet
					Location: HMFO; HMFO Low
					Profile; HMFO Set Forward;
					HMRO; HMRO Set Forward
					Fuel Type: Diesel
					Tapped Fittings: NPT
					Brazil (CBL) May Substitute
					3918986 Crank Assembly for
					3917443 Crank Assembly
					DEP May Use 3282987 or
					3629497 Draincock in Place of
					S923E
<input type="checkbox"/>		<a href="#">3971411</a>	Cylinder Block	1	
	1	<a href="#">3971410</a>	Cylinder Block	1	
<input type="checkbox"/>	2	<a href="#">143066</a>	Expansion Plug	2	
<input type="checkbox"/>	3	<a href="#">3004258</a>	Expansion Plug	4	
<input type="checkbox"/>	4	<a href="#">156075</a>	Expansion Plug	2	1 3/16 in.
<input type="checkbox"/>	5	<a href="#">3922072</a>	Expansion Plug	1	
<input type="checkbox"/>	6	<a href="#">3945329</a>	Bushing	7	
<input type="checkbox"/>	7	<a href="#">3970955</a>	Main Bearing Cap	7	
<input type="checkbox"/>	8	<a href="#">3905401</a>	Expansion Plug	3	
<input type="checkbox"/>	9	<a href="#">3970810</a>	Hexagon Flange Head Cap Screw	14	M14 x 2.00 x 135

<input type="checkbox"/>		<a href="#">3802367</a>	Cylinder Block Hardware Kit	1	
<input type="checkbox"/>	4	<a href="#">156075</a>	Expansion Plug	2	1 3/16 in.
<input type="checkbox"/>	12	<a href="#">S 923 E</a>	Draincock	1	
<input type="checkbox"/>	13	<a href="#">3920706</a>	Expansion Plug	2	
<input type="checkbox"/>	14	<a href="#">3008468</a>	Pipe Plug	6	1/2 NPT.
<input type="checkbox"/>	15	<a href="#">3008469</a>	Pipe Plug	1	3/4 NPT
<input type="checkbox"/>	16	<a href="#">3008470</a>	Pipe Plug	1	1 NPT.
<input type="checkbox"/>	17	<a href="#">3900257</a>	Pin Dowel	2	
<input type="checkbox"/>	18	<a href="#">3901846</a>	Pin Dowel	4	
<input type="checkbox"/>	19	<a href="#">3901969</a>	Expansion Plug	1	
<input type="checkbox"/>	20	<a href="#">3928031</a>	Piston Cooling Nozzle	12	
<input type="checkbox"/>	21	<a href="#">3906619</a>	Pipe Plug	6	1/8 NPT.
<input type="checkbox"/>	22	<a href="#">3926048</a>	O-Ring Seal	1	
<input type="checkbox"/>		<a href="#">3800328</a>	Liner Kit	6	
<input type="checkbox"/>	10	<a href="#">3948095</a>	Cylinder Liner	1	
<input type="checkbox"/>	11	<a href="#">3907177</a>	Rectangular Ring Seal	1	
<input type="checkbox"/>		<a href="#">3924445</a>	Shim	A/R	0.25mm Oversize (0.010 in.)
<input type="checkbox"/>		<a href="#">3924446</a>	Shim	A/R	0.38mm Oversize (0.015 in.)
<input type="checkbox"/>		<a href="#">3924447</a>	Shim	A/R	0.51mm Oversize (0.020 in.)
<input type="checkbox"/>		<a href="#">3924448</a>	Shim	A/R	0.75mm Oversize (0.030 in.)
<input type="checkbox"/>		<a href="#">3924449</a>	Shim	A/R	1.00mm Oversize (0.040 in.)